



Barehand-500

500kV Insulated Aerial Work Platforms

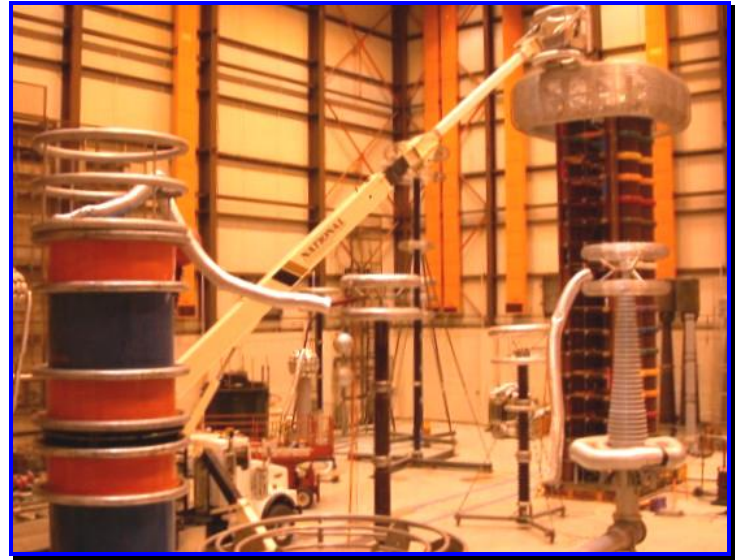


Barehand-500 insulated aerial work platforms are designed to work on up to 500kV transmission lines. These insulated platforms enable bare-hand maintenance, inspection and repairs while the system is energized.

Each Barehand-500 platform is built for dependable performance, increased safety and reduced maintenance. It features proportional controls to smoothly place the platform precisely where it is needed.

Operating Benefits:

- Permits bare-hand work and de-energized line construction
- Minimizes lineman fatigue, risk of injury and increases productivity
- Reduces the need for insulated ladders and hot sticks
- Allows safe entry into various limits of approach with up to 40° jib articulation.
- Requires minimal setup time
- Increases the utilization of a non-insulated boom truck
- Eliminates the shutdown of transmission lines for maintenance



Above is a Barehand-500 on a boom truck undergoing the 1M volt test. The sealed, insulated boom design recorded a leakage of only 104uA. This ultra low leakage is due to the lack of hydraulics or fiber optics inside the boom.



Quick Crane Deployment

By storing the Barehand-500 under the crane, setup of the crane for live-line work is much faster than any other jib-storing method. The Barehand-500 is also capable of storing the jib to the side of the crane in order to create space to transport equipment on the deck.



Safety Features



Aluminum Platform: Two man platform constructed of 6061-T6 aluminum which is rated at 600 lbs. and load tested at a 5:1 safety factor.



Platform Leveling System: Closed system brake locks the platform in place.



Personnel Platform Controls: Fully proportional adjustments for fine metering from the platform to ensure a safe and smooth entry into the limits of approach.



Corona Ring: Knife-edged corona ring displaces current leakage.

Current Leakage Monitor: Provides continuous monitoring of current leakage while working on and around energized powerlines.

Load Moment Indicator: Gives the operator the information necessary to fully utilize the working capacity of the crane while keeping within its safe working limits.

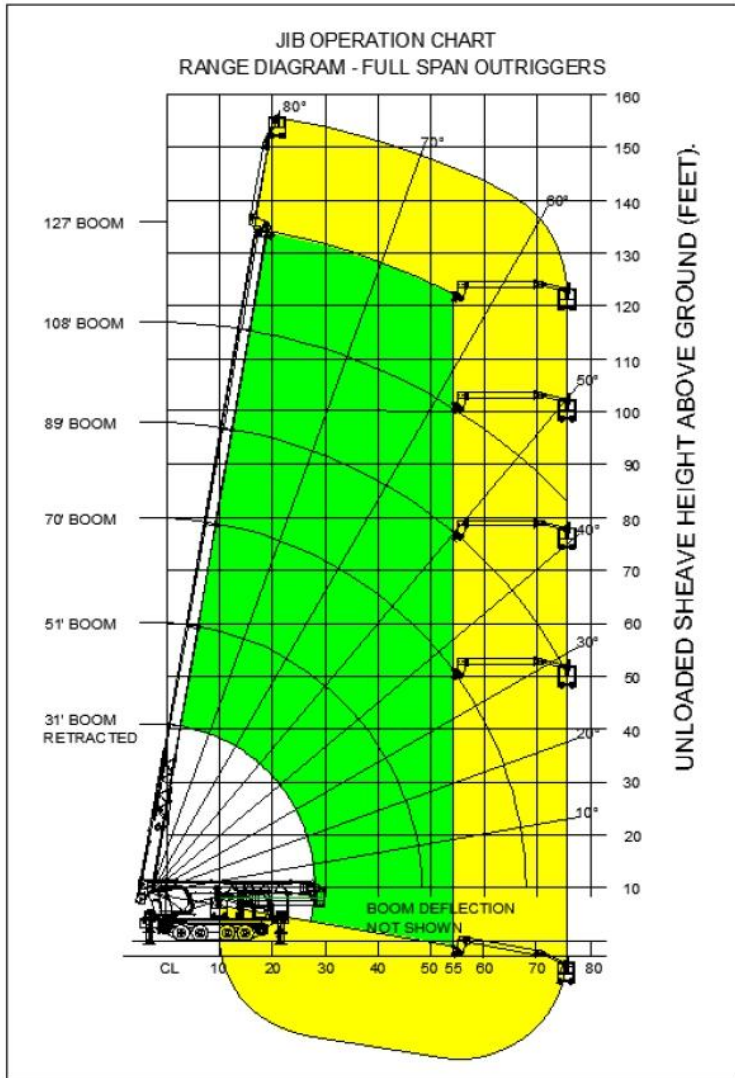


Sealed Boom: with desiccant cartridge reduces contamination, moisture and current leakage.

Barehand-500 Specifications

Operating Range Chart

Altec AC38-127 Crane



Features List

Controls

- Radio remote platform controls
- Extra battery for remote controls
- Battery charger

Insulated Jib

- Sealed fiberglass jib assembly
- 40° jib articulation
- Knife Edge Corona Ring
- Corona Ring Protective Case
- Boom-tip bonding straps
- Vinyl jib storage cover
- Jib stows under or beside crane
- Desiccant canister

Platform

- Two-man gravity level 36" x 60" platform with manual brake
- 270kg (600 lbs.) platform capacity
- Battery-powered lights on platform
- **Optional battery-powered leveling system (reduces capacity by 25kg)**

Regulatory Compliance

- Certification to 500kV
- Certification to Category "A" of ANSI A92.2, CSA 225(00), IEC 61057

Services

- Operating manuals and delivery provided with bolt-on, work-ready Barehand-500 platform



sales@lineproequip.com www.lineproequip.com