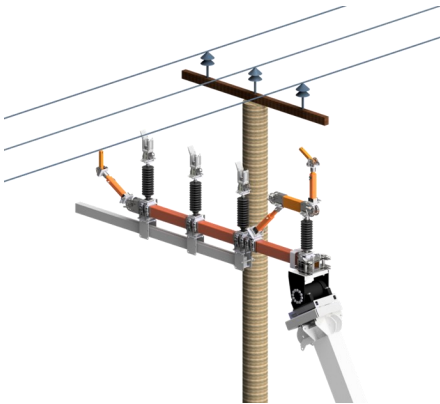


PowerArm

Modular Multi-Function Insulated Jib

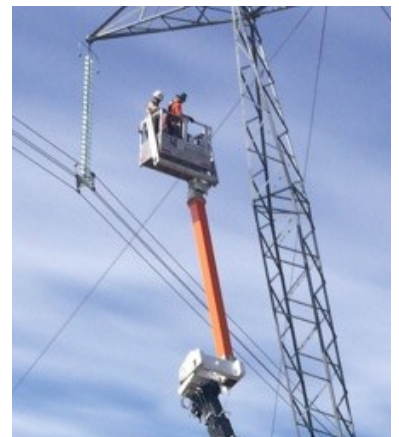
“Safer and Faster Live Line Work”



Mode 1: Up to 72KV & 500 lbs./Phase
Line Lifting Package



Mode 2: Up to 230kv & 2,000 lbs./Phase
With Aux. Boom Line Lifting Package



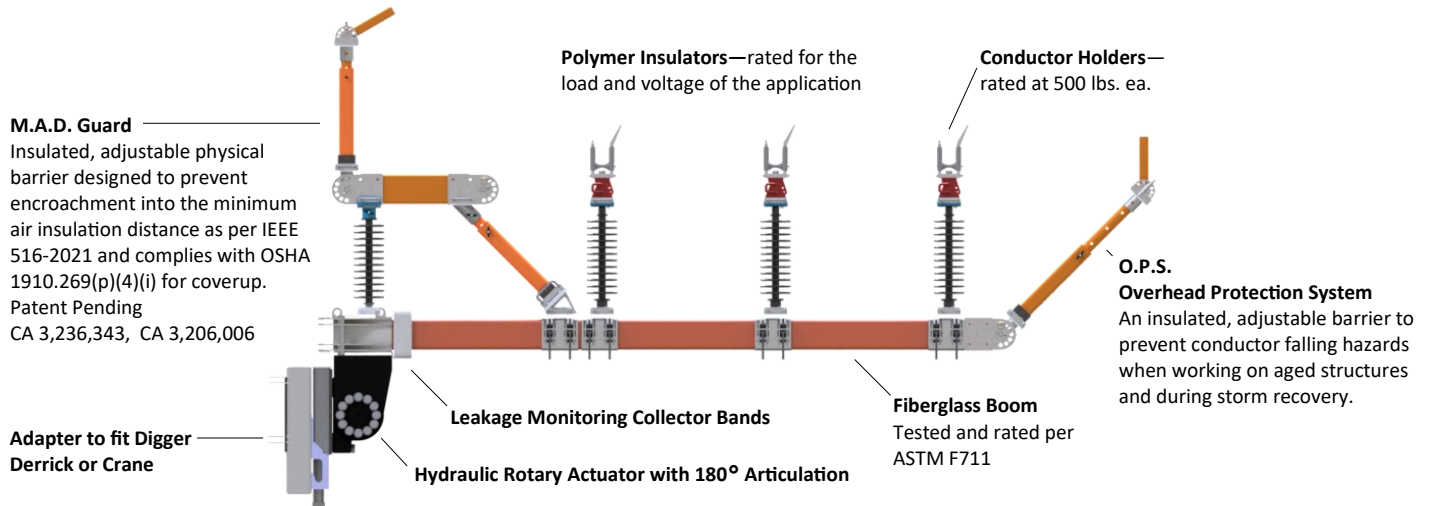
Mode 3: Cat. A or Cat. B
Insulated Work Platform Package



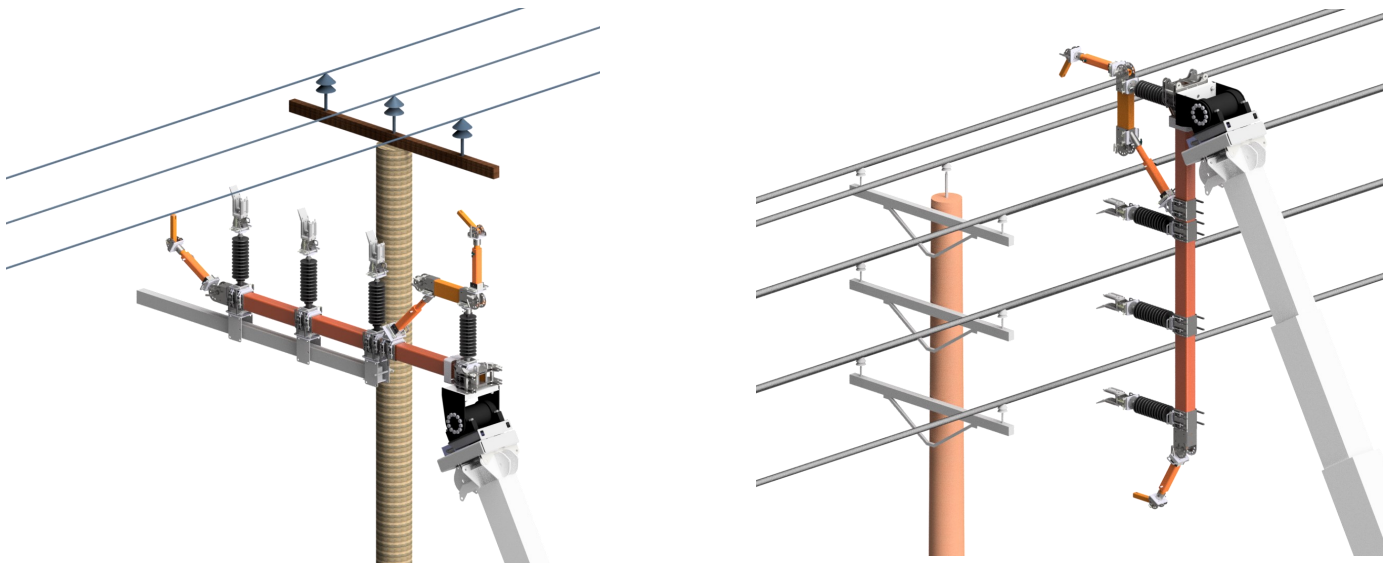
Jib Assembly Stows for Fast and Easy Transport and Setup

PowerArm ST

MODE 1: 3 Phase Sub-Transmission Voltage Up to 72kV



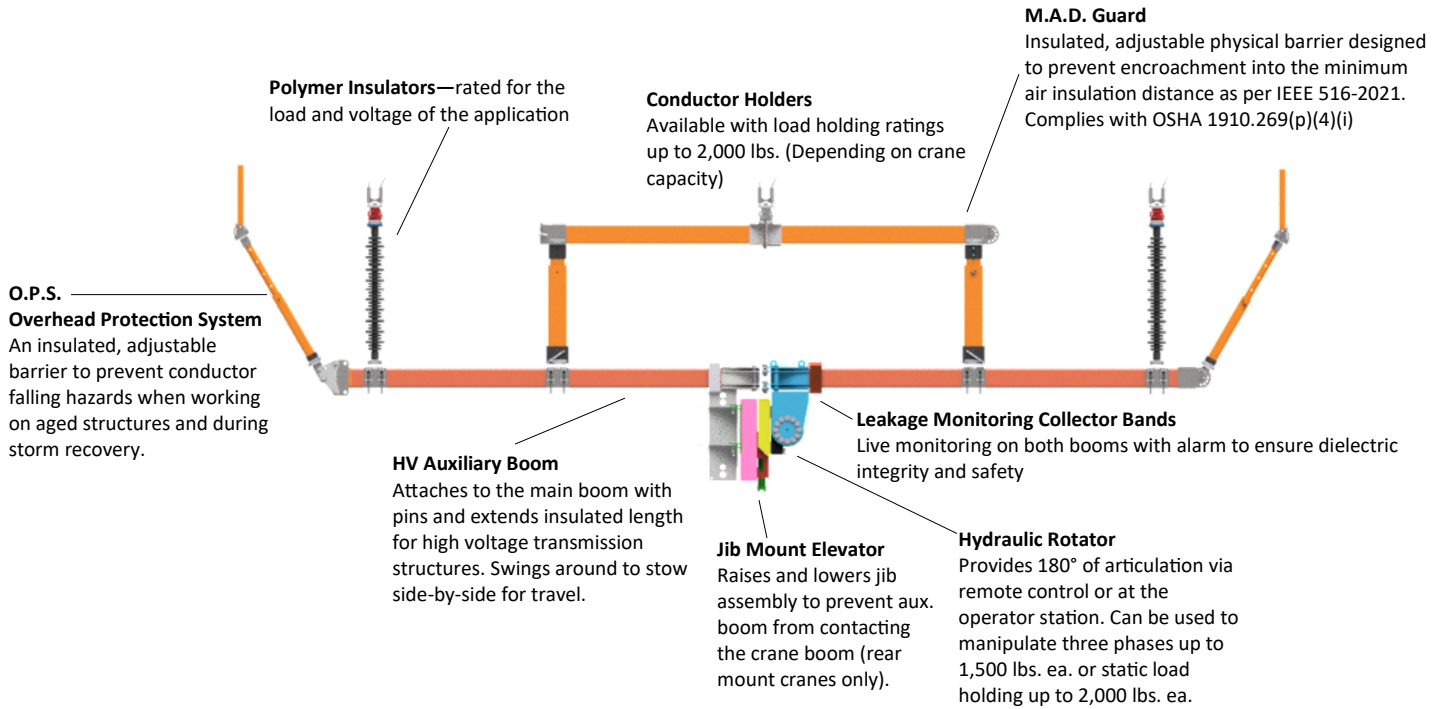
Sample Working Orientations



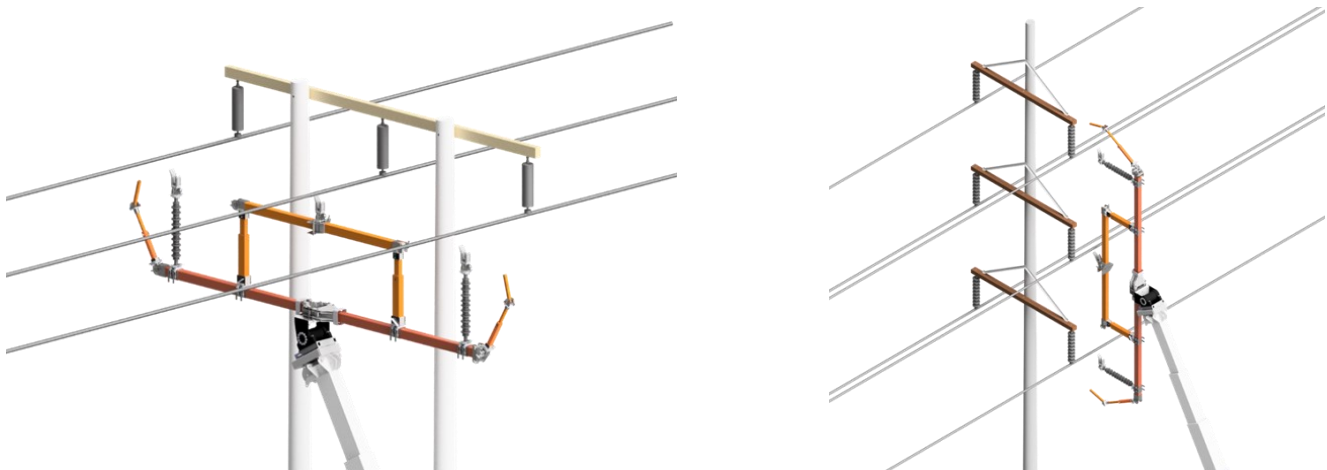
Above Left: PowerArm is positioned to capture the live lines and replace the cross-arm in one lift. Cross-arm could be fully -dressed, further increasing speed of task while maintaining limits of approach. The M.A.D. Guard and O.P.S. will be there to contain the live lines and maintain the Safe Work Area in a worst-case scenario. Max phase spacing 7'.

PowerArm HV

MODE 2: Transmission Voltage Up To 230kV



Sample Working Orientations



Above Left: PowerArm is configured for EHV applications with modular auxiliary boom pinned onto main boom as shown in Mode 1. The M.A.D. Guard spans the conductive portion of the boom to prevent energizing the crane. The maximum phase spacing of up to 20' allows the operator to pick and carry conductors to create 8'+ limits of approach for replacing h-frame poles.

PowerArm I.W.P.

MODE 3



Above Left: PowerArm’s I.W.P. (Insulated Work Platform) Configuration is stowed on the crane for transport to save effort, time and money when being deployed. The hydraulic rotator is remote-controlled and helps to maintain maximum limits of approach. This configuration is rated as Category A or B insulation so hotsticks or other primary forms of insulation must be used for live line work. It is also great for use as an elevator and for clearing vegetation near powerlines.

The PowerArm is multi-functional and allows the industry’s most safe, efficient and cost-effective live line work practices.

Modular Jib Specifications

	POWERARM ST—MODE 1	POWERARM HV—MODE 2	POWERARM I.W.P- MODE 3
VOLTAGE RATING	11-72KV THREE PHASE 230KV SINGLE PHASE	72KV-138KV THREE PHASE	500KV CAT. B
LOAD CAPACITY	500 LBS./PHASE @ 3 PHASES 1,000 LBS. SINGLE PHASE	SD :UP TO 1,000 LBS./PHASE HD: UP TO 2,000 LBS./PHASE	600 LBS PLATFORM
MAX PHASE SPACING	UP TO 7’/PHASE	UP TO 20’/PHASE	17’ CLEAR INSULATION
LEAKAGE MONITORING	YES	YES	YES
STOWS ON UNIT	YES	YES	YES
FITS	DIGGER DERRICKS AND CRANES	CRANES (MID-MOUNT AND REAR-MOUNT)	CRANES (MID-MOUNT AND REAR-MOUNT)
REGULATORY COMPLIANCE	ASTM F711, IEEE 516, OSHA 1910.269 CSA Z150	ASTM F711, IEEE 516, OSHA 1910.269, CSA Z150	CSA C225, ANSI A92.2