

LinePro[®] EQUIPMENT LTD

Barehand-765R

Side-by-Side Stow for Rear-Mount Cranes



765kV Insulated Work Platform with 210° Hydraulic Articulation

Patent Pending 9/13

Next Generation Insulated Work Platforms

Side-by-Side Mount for Speed and Safety
Reduce Time and Cost of Operation!



Quick Setup and Stow

By self-stowing the Barehand-765R beside the crane, setup of the crane for platform work is easy, fast and safe.

The jib with hydraulic rotator reduces this process to one step and can easily pay for itself many times over in savings throughout the life of the truck.



Left: Jib being tested at 575kV AC for the Cat. A certification. This jib achieves low current leakage reading due to its high dielectric strength and maintenance-free design. Low current leakage also improves worker comfort and safety.

Advantages



+Productivity

- 210 degrees of remote-controlled articulation allows increased range for performing work at lower heights, as well as reaching higher and across structures. This allows crews to increase productivity by completing tasks faster, with less equipment and more flexibility when setting up on the work site.

+Reliability

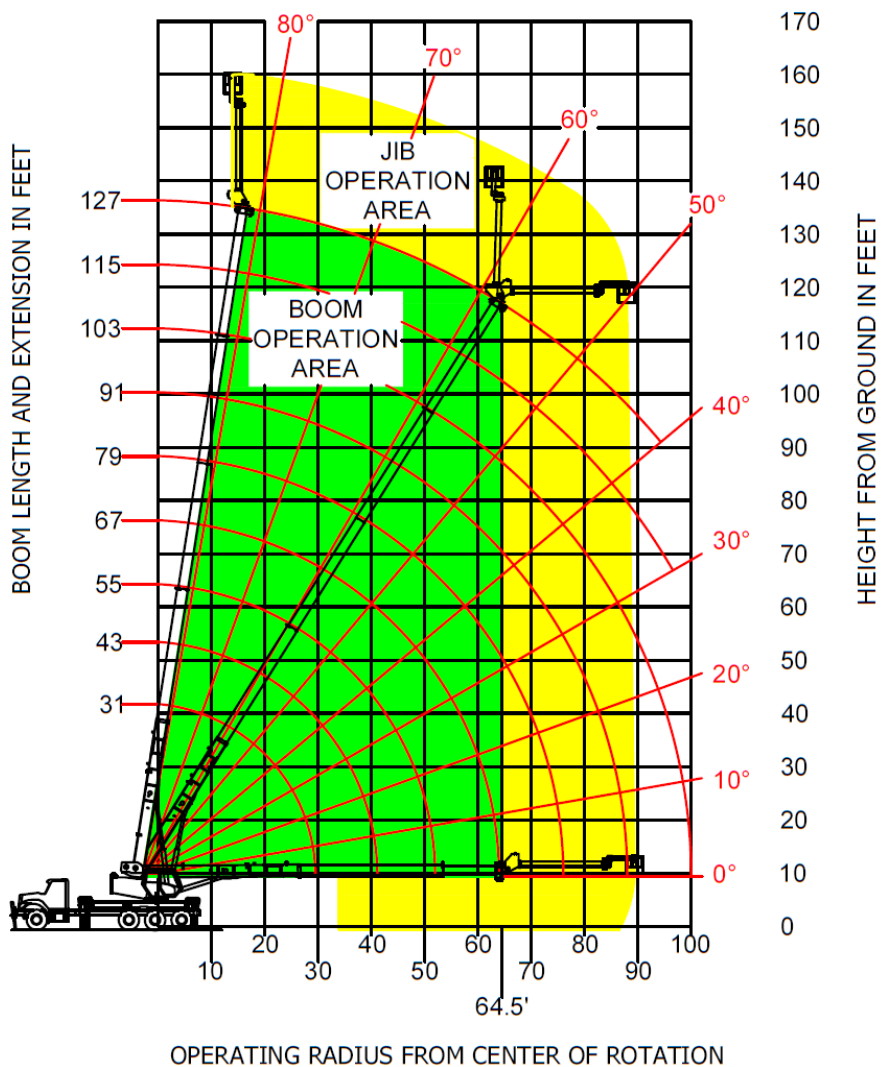
- Sealed boom has replaceable desiccant to maintain maximum dielectric strength.
- Boom is void and has no hydraulics or cables running through it, reducing chance for contamination and increasing reliability.
- Simple boom design allows worry-free and reliable testing results with electrical leakage around 10% of maximum allowable by ANSI, CSA, IEC standards.
- Hydraulic rotator is rated to 20,000 cycles and uses the crane's hydraulic fluid system for many years of trouble-free operation.
- Aluminum platform is rust-free and uses gravity-based leveling system with hydraulic damper for maintenance-free operation.

+Safety

- Inclinator sensor prevents jib from exceeding vertical position at higher than 60° boom angle.
 - Self-stow feature eliminates need to assemble and mount jib in the field, reducing chance of injury.
 - Custom jib setting on LMI system limits radius before entering into HOP. This ensures safe operation and maintains stability under all circumstances.
 - Radio remote controls are shielded to allow for bonded applications such as bare-hand work up to 765kV.
 - FRP boom is empty to allow for maximum insulation strength, reducing electrical current exposure to PLTs which increases comfort, safety and decreases potential negative health effects.
 - Hydraulic rotator is equipped with dual counter-balance valves which prevents movement should there be a hydraulic leak or pressure loss.
-

BAREHAND-765R

Sample Range Chart



Features

Insulated Section

- 210* Hydraulic Articulation
- Continuous Leakage Monitoring
- Self-Stows for Transport
- Sealed Boom with Desiccant
- Vinyl Jib Storage Cover

Platform

- Aluminum Two Man Platform
- Hydraulic-Dampened Gravity Leveling
- 600 lbs.-800 lbs. Load Capacity

Options:

- Automatic Leveling of Platform (Patent Pending)
- Trailer with Quick-Mount Storage

Controls

- Radio Remote Controls (shielded) with 5th Function for Jib Articulation
- Extra Battery for Remote Controls
- Battery Charger

Regulations

- Certified to ANSI A92.2, CSA C225(00), IEC 61057, for up to 765kV Class A Bare-hand Work

Training

- Basic Operation Training Provided
- Live-Line Training and Work Methods Available.

- Sample Range Chart meets CSA Standards
- Based on National NBT40 Crane and LinePro Barehand-765R Jib
- Complete Line Trucks Available to Meet Your Specification



Ph: 1-604-807-1478 Fax: 1-604-676-2492
 sales@lineproequip.com www.lineproequip.com