

# LinePro EQUIPMENT LTD

## Barehand-765HA



765kV AC/500kV DC Insulated Work Platform with *Hydraulic Articulation*

*Patent Pending 9/13*

# Next Generation Insulated Work Platforms

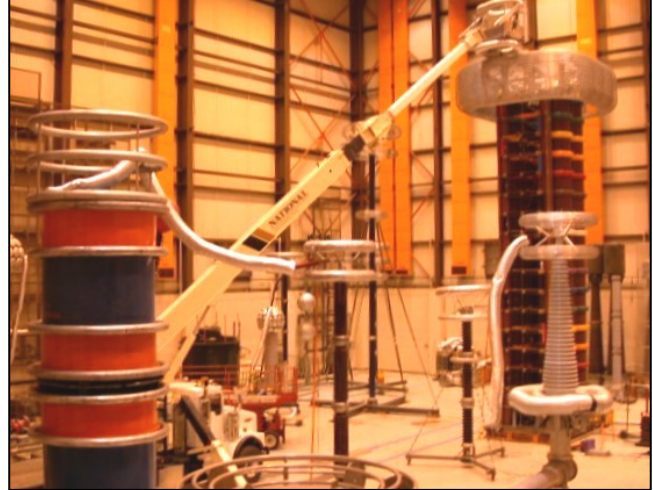
Barehand-765 insulated aerial work platforms are designed to work on up to 500kV transmission lines. These insulated platforms adapt to existing cranes to enable bare-hand maintenance and repairs while the lines remain energized.

maintenance. It features proportional controls and on-the-fly hydraulic articulation to smoothly and precisely place the platform into the safe work area.

## Operating Benefits:

- Permits bare-hand work and de-energized line construction
- Minimizes lineman fatigue, risk of injury and increases productivity
- Reduces the need for insulated ladders and hot sticks
- Allows safe entry into various limits of approach with up to 210° on-the-fly, remote-controlled hydraulic articulation.
- Requires minimal setup time
- Increases the utilization of a non-insulated boom truck
- Reduces the requirement for planned outages when performing line maintenance
- Allows crews to use bare-hand techniques at lower voltages and smaller structures due to the hydraulic articulation
- Platform can be pinned directly to crane without fiberglass jib for line construction and other de-energized work

**Each Barehand-500 platform is built for dependable performance, increased safety and reduced**



*Above is a Barehand-765 on a boom truck undergoing ANSI A92.2 test and typically records a leakage of 50-60uA on the 575kV AC test. This ultra low leakage is due to the lack of hydraulics inside the boom which increases safety, reliability and up-time.*

## Quick Setup

By storing the Barehand-765HA under the crane, setup of the crane for aerial work is much easier and faster than any other jib-storing method.

**The optional hydraulic rotator reduces this process to one step and can easily pay for itself in time savings throughout the life of the unit.**



# Safety Features



**Aluminum Platform:** Two-man platform constructed of 6061-T6 aluminum which is rated at 600-800 lbs. capacity. Includes aluminum case for protection of corona ring. *Top Right:* Flooring uses a non-slip surface for sure-footedness of occupants. *Right:* Shows brake assembly, jib angle indicator and portable tray for the radio remote control.



**Radio Remote Controls:** Fully proportional adjustments for fine metering from the platform to ensure a safe and smooth entry into the limits of approach. Includes paddles for each function, as well as low RPM switch for creep mode, and dead man safety. Certified for 500kV Cat. A bonded applications.



**Sealed FRP Boom:** Replaceable desiccant cartridge reduces contamination, moisture and current leakage.



**Current Leakage Monitor:** Provides continuous monitoring of current leakage while working on and around energized powerlines.

**Hydraulic Rotator:** Allows up to 210° of remote controlled articulation from the platform. Includes a safety-port valve which indicates an overload situation and has mechanical and hydraulic fail-safes so the platform won't ever "leak-down" from a loss of hydraulic fluid or pressure.

# BAREHAND-765HA

## Sample Operating Range Chart

## Features

### Insulated Section

- 210\* Hydraulic Articulation
- Continuous Leakage Monitoring
- Stows Under Boom for Transport or on Deck-Mounted Rack
- Sealed Boom with Desiccant
- Vinyl Jib Storage Cover

### Platform

- Aluminum Two Man Platform
- Hydraulic Leveling System
- 600-800 lbs. Load Capacity

### Controls

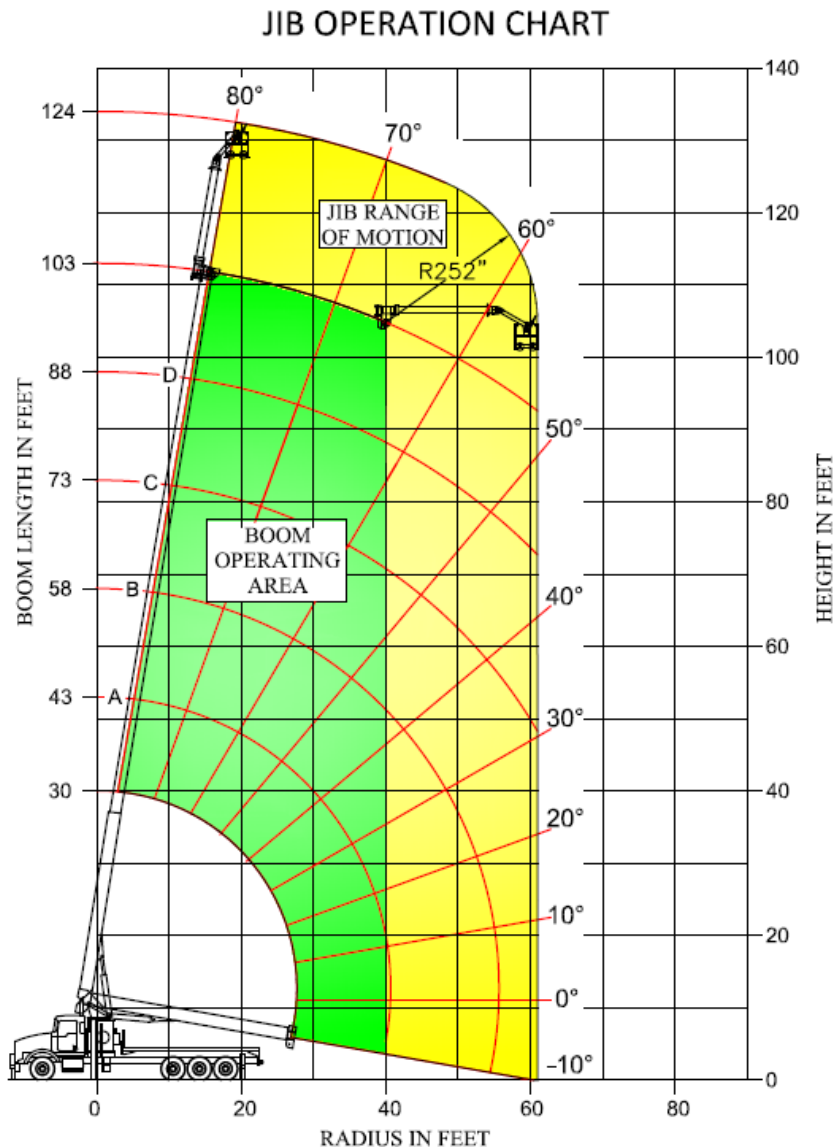
- Radio Remote Controls (shielded) with 5th Function for Platform Articulation
- Extra Battery for Remote Controls
- Battery Charger

### Regulations

- Certified to ANSI A92.2, CSA C225(00), IEC 1057, for up to 500kV Class A Bare-hand Work

### Training

- Training provided with Barehand-765HA.
- Live-Line Training and Work Methods Available.



Sample Range Chart in accordance with ANSI A92.2 standards.

- Based on 26 Ton Crane
- Minimum Crane capacity for Barehand-765HA is 26 Ton.



Toll Free: 1-877-804-9989 Fax: 1-604-676-2492  
sales@lineproequip.com www.lineproequip.com